



**LOCOMOTIVE
SERVICES**

**KEEPING YOUR
LOCOMOTIVES
ON THE
INCOME-EARNING
TRACK**



The BN1 and BN2 locomotives (shown at right and on front cover) were originally manufactured in 1954. In 1990, they were fully modernized by BN's locomotive maintenance staff, many of whom appear in the photo at right. With over 2,850 trained technicians and totally modernized facilities, Burlington Northern builds quality and safety into every component we service.

KEEPING YOUR
LOCOMOTIVES
ON THE
INCOME-EARNING
TRACK

Maintaining 2,400 Burlington Northern locomotives at peak operating efficiency is a demanding job — and one we take pride in. Our continual investment in locomotive equipment, repair facilities, quality processes and advanced technical training has made Burlington Northern one of the nation's safest and most efficient locomotive fleets.

Now, the same concern for safety and attention to quality that has made Burlington Northern a transportation leader for over 100 years is available to you — locomotive equipment owners!

Burlington Northern offers comprehensive locomotive repair and overhaul services. We offer quality repair and return services or can provide unit exchange service from our extensive inventory of qualified components.

From traction motors to wheel sets, module cards to air brakes and everything in between, you can depend on Burlington Northern's top quality locomotive services.

BN's Major Locomotive Backshop in West Burlington, Iowa (shown below), is supported by our Air Brake Shop and Havelock Wheel Plant, both in Lincoln, Nebraska.



PEAK EFFICIENCY

L O C O M O T I V E



BURLINGTON
NORTHERN
RAILROAD



FOR COMPLETE
LOCOMOTIVE SERVICES
INFORMATION CALL

1-800-551-BNRR

1-800-551-2677

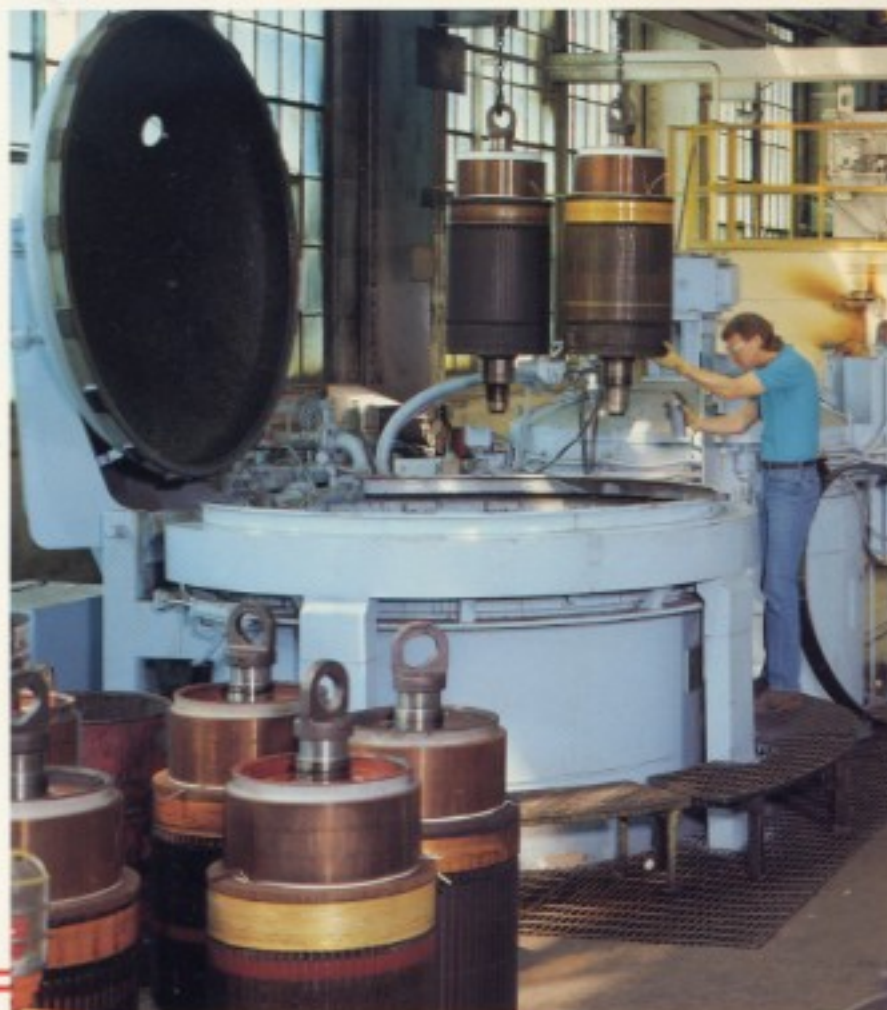
S E R V I C E S

TRACTION MOTORS

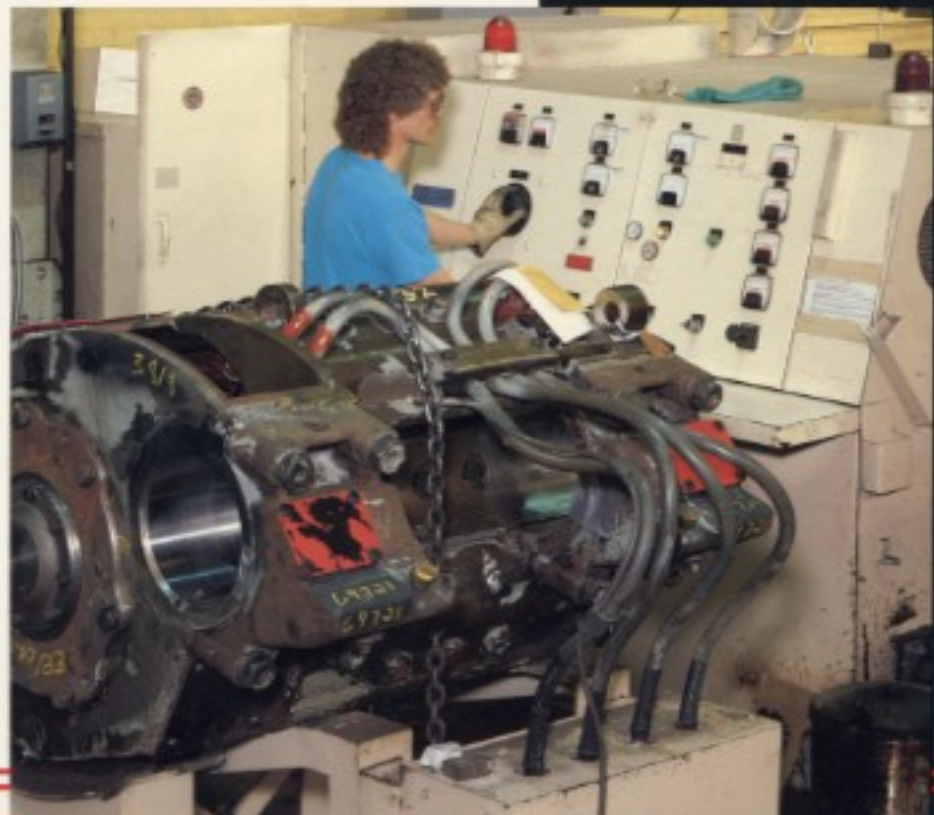
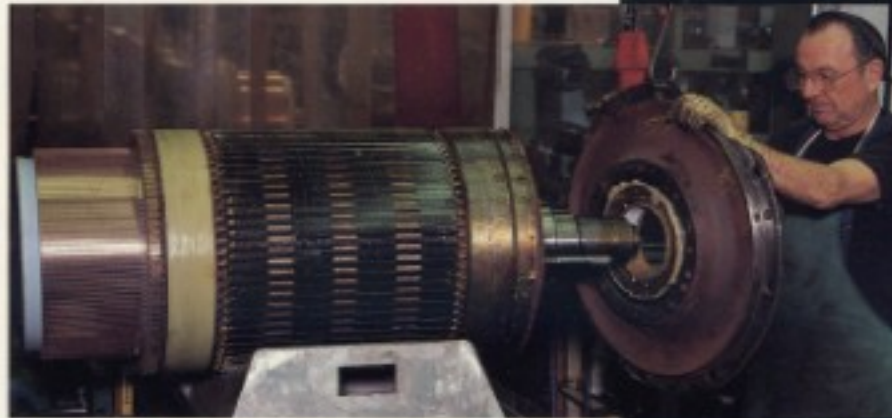
Unproductive traction motors are one of the most common causes of locomotive failure. Now the same team who turns out high quality traction motors for Burlington Northern can improve the life cycle of your motors and help you increase your Mean Days Between Failures (MDBF).

With BN's multi-million dollar investments in upgrading equipment, improving production processes, refining quality inspection criteria and providing ongoing training, our West Burlington Traction Motor Shop has met and exceeded its quality, safety and production goals. Through 57 work station operations, GE and EMD traction motors are dismantled, cleaned, qualified, repaired, reassembled and tested to OEM standards.

Through our ongoing commitment to quality, BN has tripled its MDBF over the past four years. The same quality care that has significantly improved the operation of BN's locomotive fleet can do the same for you.



L O C O M O T I V E



AIR BRAKES

At Burlington's Air Brake Shop, highly-skilled technicians completely dismantle, clean and inspect all components of 26L locomotive air brakes. Diaphragms, gaskets, seals, o-rings and check valves are replaced. Reassembled components are fully cycle-tested to meet the high quality standards specified by the original equipment manufacturer.



POWER ASSEMBLIES

Burlington Northern's Power Assembly Shop operates a completely modernized production-flow type operation. This new process provides for minimum handling of parts, in-process documented inspections to OEM standards, and significantly improved carbon buildup removal. Efficient, ergonomically designed work station operations and test procedures increase technician productivity. Both EMD and GE power assemblies are overhauled in an efficient, high quality manner which assures dependable performance and maximum life cycle of each component part.



B
BURLINGTON
NORTHERN
RAILROAD



S E R V I C E S

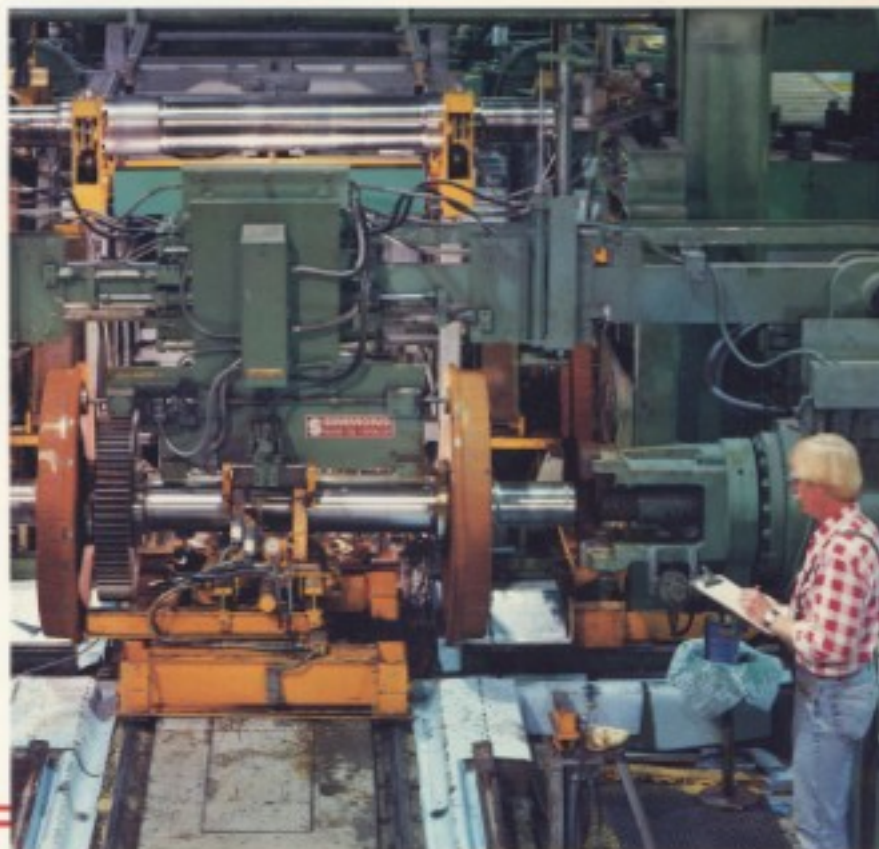
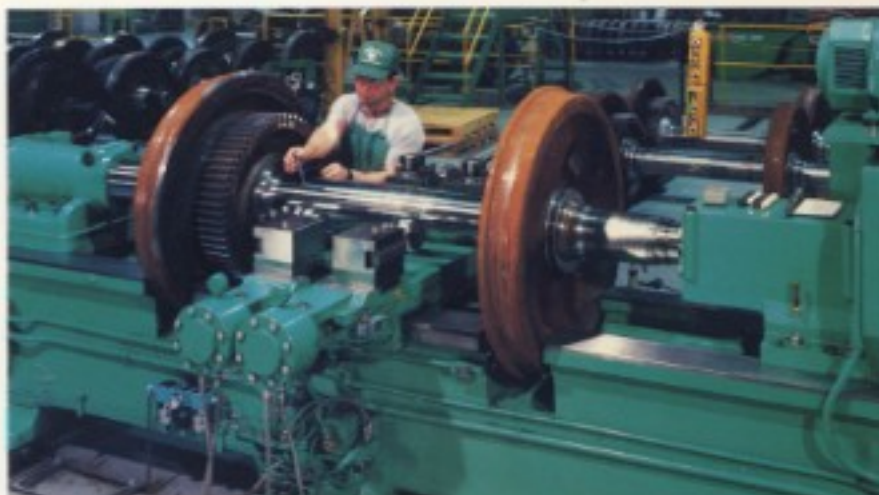
CAR & LOCOMOTIVE WHEEL SETS



ur wheel services are the most extensive in the nation. With 30 wheel removal/replacement sites and our centralized, 61,000 square foot Havelock Wheel Plant, Burlington Northern provides speedy, dependable service.

Leading-edge technology enables BN to produce quality new and reconditioned wheel sets for both locomotives and freight cars. One of the most advanced facilities in the industry, our Wheel Plant features a material-handling robot, fully-automated mount and demount presses, computer-controlled boring mills and more.

Burlington Northern is your efficient, economical choice for locomotive and freight car wheel set repair or replacement. Our wheel sets measure up to the closest tolerances, which meet or exceed ARR and manufacturers' standards every time. We can meet the quantity and configuration requirements you demand, with delivery when and where it's needed. So turn to BN for wheels to keep you rolling.



L O C O M O T I V E



S E R V I C E S

COMPONENT SERVICES

Burlington Northern has the total capability to provide complete major-class overhauls, or service individual locomotive components. In addition to our specialized traction motor, air brake, power assembly and wheel services, we repair and overhaul governors, module cards, main generators, fuel pumps. . . any locomotive component.

We have strategically located facilities and a highly-trained and qualified work force. Our internal bar code system tracks and documents labor operations, quality assurance inspections, and materials, helping us control costs and maximize efficiency.

We offer comprehensive *repair and return* of your components on normal-cycle delivery. Or choose quick service shipping on a *unit exchange* basis from our extensive inventory of quality rebuilt and overhauled locomotive components.

By continually upgrading our processes and equipment, we constantly improve the quality and safety of every component we service. We stand behind all our work with the Burlington Northern warranty, an assurance of satisfaction.



L O C O M O T I V E

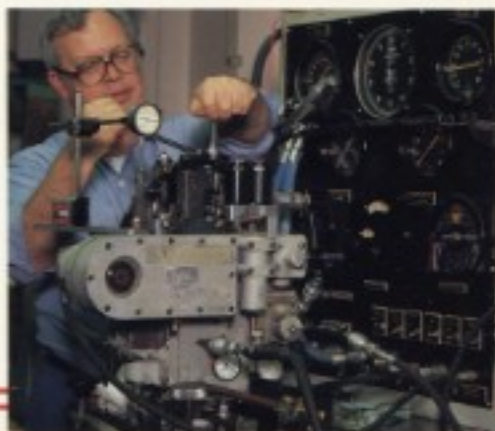


QUALITY & SAFETY

Burlington Northern's locomotive mechanical service personnel and facilities are ranked among the nation's finest. In recent years, more than 12,000 members of the BN team have participated in our Quality Improvement Process training programs. Our upgrade program keeps BN locomotive service facilities the most technically advanced in the industry.

Our Quality and Safety Departments assure that our procedures are second to none. BN Corrective Action Teams continually refine our processes, increasing the reliability of every locomotive we service. GE and EMD field technicians are on-site full time to provide engineering change information, inspect worn and defective materials, and assist in analyzing component performance.

Quality. Experience. Technology. Capacity. Burlington Northern offers you the finest locomotive mechanical services. Our know-how, production resources and commitment puts your locomotives and components back where they belong — on the income-earning track.






BURLINGTON
NORTHERN
RAILROAD



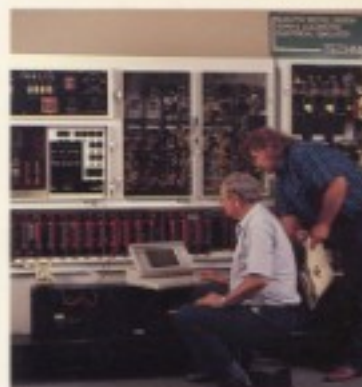
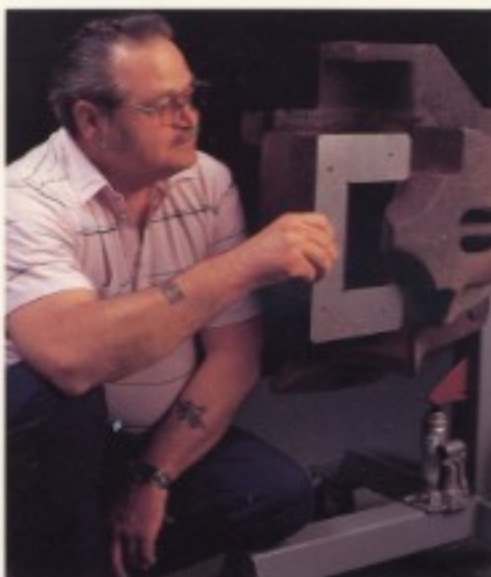
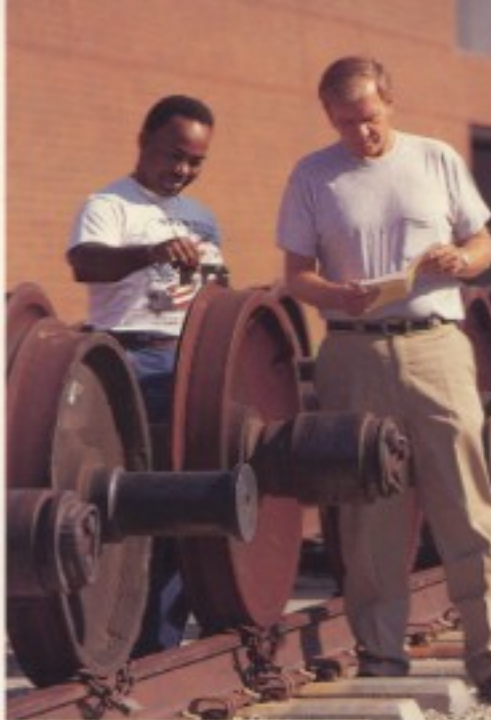
S E R V I C E S

TECHNICAL TRAINING

You tell me, and I forget.
You teach me, and I remember.
You involve me, and I learn.
—Benjamin Franklin

Like many of the 28,000 employees actively involved in continuing education at BN's Technical Training Center, students in the mechanical training section participate in classes which replicate real world experience. Many of these courses utilize one-of-a-kind simulators custom built by the instructors who interact with students on an individual basis. Such quality training enables mechanical training recipients to safely and efficiently inspect, maintain and repair the railroad's 2,400 locomotives and 60,000 freight cars.

The Technical Training Center is located at one of the nation's top ten schools in its class, Johnson County Community College in Overland Park, Kansas. With such a unique cooperative educational effort towards developing a highly-trained work force, Burlington Northern can confidently pursue its primary goal of meeting each customer's needs. We can assist you in reaching the same goal.



L O C O M O T I V E

For complete locomotive services information call: **1-800-551-BNRR**

Or contact these individuals to discuss your specific requirements.



MECHANICAL DIVISION OFFICE

9401 Indian Creek Parkway
P.O. Box 29136
Overland Park, Kansas
66201-9136

Ray Murray
Manager
Equipment Marketing
913-661-4161



Dale Propp
General Superintendent
Locomotive Operations
913-661-4118



Ron Swearengen
General Superintendent
Car Operations
913-661-4131



General marketing and pricing information for all locomotive services.

WEST BURLINGTON LOCOMOTIVE SHOP

N.W. Burlington Avenue
P.O. Box 548
West Burlington, Iowa
52655

John Johnson
Manager Customer Service
319-753-9719



Darrell Zuerlein
Shop Superintendent
319-753-9690



Job status, incremental work and technical support information on class overhauls and locomotive components.

HAVELOCK WHEEL PLANT

6600 Burlington Avenue
Lincoln, Nebraska
68507

Levi Newport
Superintendent Car Planning
254-4133



Rick Collins
Manager Wheel Plant
402-437-3212



Bob Stremcha
Shop Superintendent
402-437-3221



Pricing, delivery cycles and technical support on all locomotive and freight car wheel sets.

LINCOLN AIR BRAKE SHOP

801 West O Street
Lincoln, Nebraska
68528

Harold Dissmeyer
Locomotive Supervisor
402-473-7563



Carl Stendahl
Superintendent Air Brakes, FRA
913-661-4156



Pricing, delivery cycles and technical support on 26L air brake components.

TECHNICAL TRAINING CENTER

12345 College Boulevard
P.O. Box 29136
Overland Park, Kansas
66201-9136

Mike Voelker
Director Technical Training Center
913-661-4122



Class schedules, course descriptions, recommended living accommodations and associated costs for all railroad training.



**BURLINGTON
NORTHERN
RAILROAD**

**PROVIDING COMPLETE
LOCOMOTIVE SERVICES**

**CONTACT US FOR
FURTHER INFORMATION**

**1-800-551-BNRR
1-800-551-2677**

**MECHANICAL DIVISION
OFFICE**

9401 INDIAN CREEK PARKWAY
P.O. BOX 29136
OVERLAND PARK, KANSAS 66201-9

SERVICE FACILITIES

**WEST BURLINGTON
LOCOMOTIVE SHOP**

N.W. BURLINGTON AVENUE
P.O. BOX 548
WEST BURLINGTON, IOWA 52655

HAVELOCK WHEEL PLANT

6600 BURLINGTON AVENUE
LINCOLN, NEBRASKA 68507

LINCOLN AIR BRAKE SHOP

801 WEST O STREET
LINCOLN, NEBRASKA 68528

**TECHNICAL TRAINING
CENTER**

12345 COLLEGE BOULEVARD
P.O. BOX 29136
OVERLAND PARK, KANSAS 66201-9

S E R V I C E S



**BURLINGTON
NORTHERN
RAILROAD**

**LOCOMOTIVE
SERVICES**

**KEEPING YOUR
LOCOMOTIVES
ON THE
INCOME-EARNING
TRACK**



1-800-551-BNRR



**PROVIDING QUALITY
MECHANICAL SERVICES
FOR GE AND EMD
LOCOMOTIVES AND
LOCOMOTIVE COMPONENTS.**

**CALL TODAY FOR
COMPLETE INFORMATION.**

1-800-551-2677